

Default configuration settings for Penmount Touch panel driver used with AVSI (Active View Systems Inc.) touch panel on WES7 systems

9-22-2022



*Important first step is to remove any touchscreen drivers from the target system prior to installing this driver – (thru add / remove programs)

For consistency place the file new driver in the Redbox\Drivers\Touchscreen folder and unzip the folder prior to running setup.exe as discussed below

There is no calibration tool with this driver as there is no calibration needed for this touch panel unlike other models

The driver is only needed on windows 7 systems, windows 10 systems do not need the driver however the “draw” test tool can be used on windows 10 for testing on as needed basis

Driver installs with click thru setup.exe from “PenMount-Windows-Universal-Driver-V2.5.0.402-WHQL.zip

PenMount-Windows-Universal-Driver-V2.5.0.402-WHQL (1).zip > PenMount Windows Universal Driver

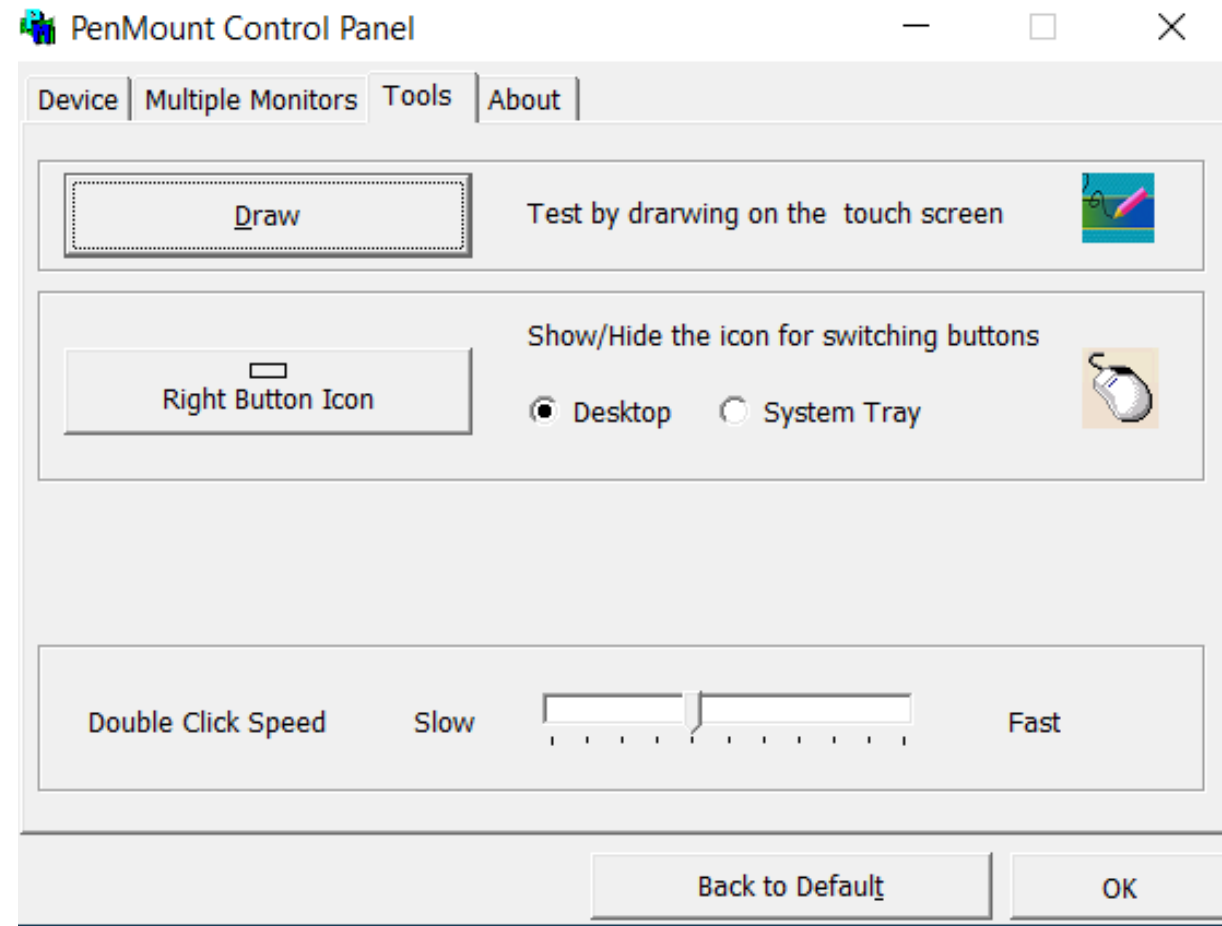
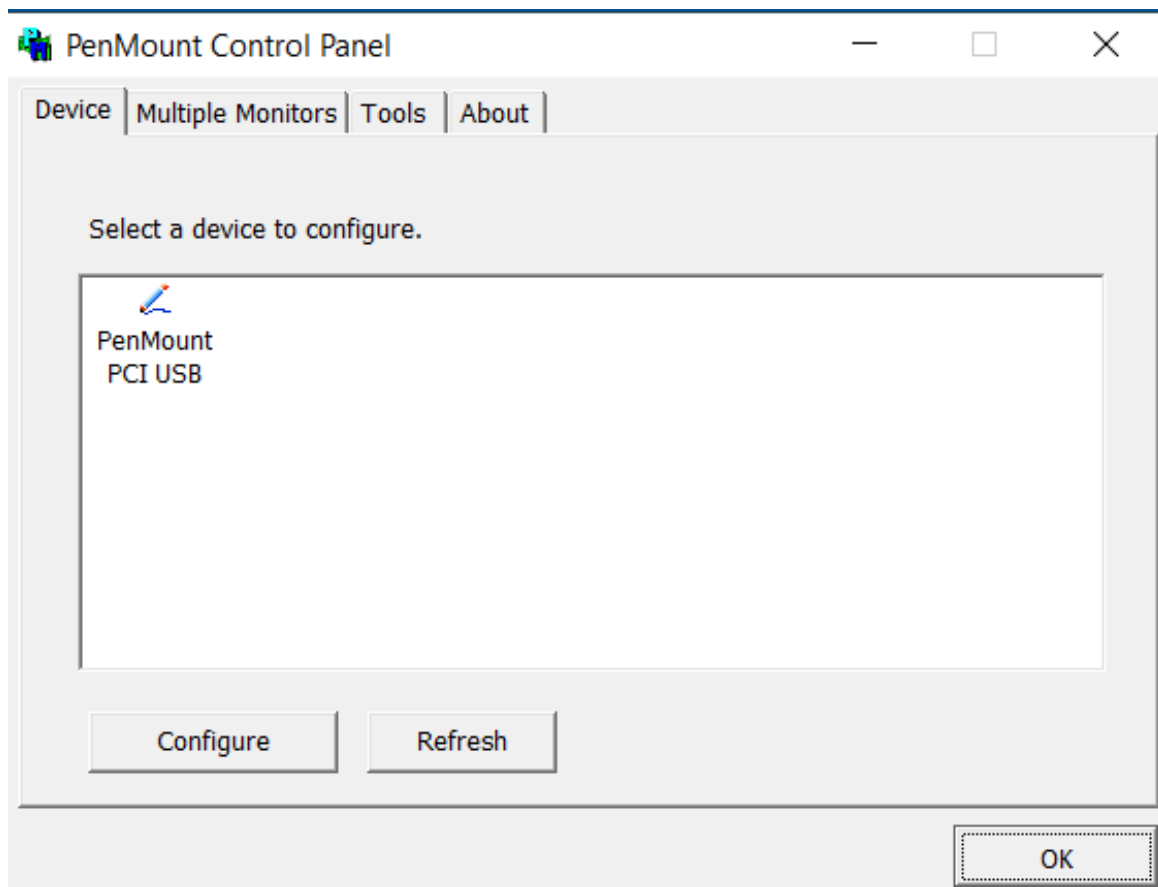
Name	Type	Compressed size
Driver	File folder	
Utility	File folder	
Setup.exe	Application	163 KB
Setup.ini	Configuration settings	1 KB

Configuration and draw test available
thru PenMount Control panel -
“Pmonitor.exe” in Utility folder

There is no calibration required or
calibration utility for this projected
capacitive touch panel system

PenMount Windows Universal Driver V2.5.0.402 (WHQL) > Utility

Name	Type	Compressed size
amd64	File folder	
i386	File folder	
Lang	File folder	
DMCCtrl.exe	Application	489 KB
DMCCtrl.ini	Configuration settings	1 KB
DMCCtrlTabletPC.exe	Application	488 KB
FirmwarePara.ini	Configuration settings	1 KB
GestureAP.exe	Application	235 KB
GestureAP64.exe	Application	295 KB
GestureSetting.ini	Configuration settings	1 KB
GestureSettingWin7.ini	Configuration settings	1 KB
PMonitor.exe	Application	302 KB
RButton.exe	Application	296 KB
SMHOOK.DLL	Application extension	58 KB



DRAW mode screen – ability to test areas of the screen and show coordinates

